



HivDDM v1.0.1.2

NEW FEATURES USER GUIDE

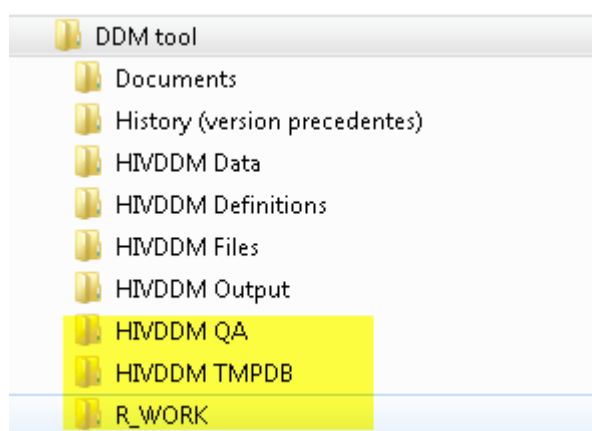
DDM-tool version 1.0.1.2 (Release date January 31st, 2014).

The HivDDM tool 1.0.1.2 can be downloaded at www.hiv-ddm.net. This same webpage has a short video-tutorial of how to use the tool. This document describes the new features added to the program since the video was made. A new instruction video will be made – but until then this document along with the existing video should enable you to use the tool and all the features.

Settings

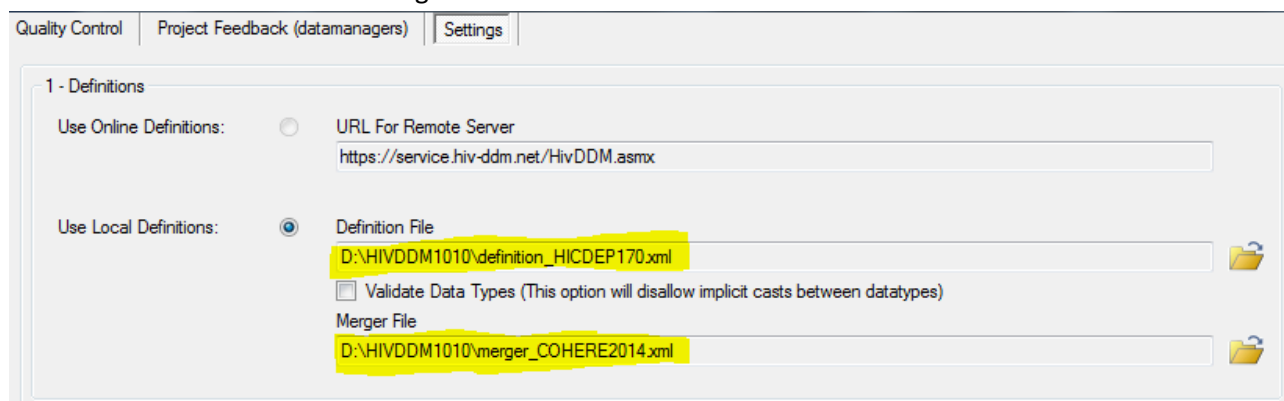
To enable new features in the tool, changes have been made to the settings tab of the DDM-tool. All new fields are highlighted in yellow in the screenshots.

With the new features in the tool we recommend you to add three new folders to your HIVDDM dossier: QA, TMPDB and R. Of course, with the tool you're free to rename these folders or to opt for a different structure.



1-Definitions

Please note that all fields should be filled out, as in all previous versions of the tool, before you have access to other tabs and can start working with tool





Please choose the "definition_HICDEP170.xml" file as the "Definition File" for the DDM-tool. This file can be downloaded along with the tool from www.hiv-ddm.net.

For the “Merger File” setting, please choose the “merger_COHERE2014.xml” that you have received as an email attachment from the RCC data manager.

2-Source data

As in all previous versions, please provide the folder where your source data (in .mdb) has been stored.

2 - Source Database

Choose the ODBC for your study database		Choose the MDB for your study database
Connection: <input type="text"/> 		<input type="text" value="P:\DDM tool\NHVDDM Data\data.mdb"/> 
<input type="checkbox"/> Use Integrated Security		
User: <input type="text"/>	OR	
Password: <input type="text"/>		
<input type="button" value="Test Connection"/> <input type="button" value="Save Connection"/>		

3. Output

In section 3 two fields specifying the format and destination of the export database have been created. This allows you to place the database that you want to send to the RCC exactly where you want to. (The fields are highlighted on the screenshot below.)

3 - Output

Keep the local data on closing the program
Unchecking this checkbox causes HIVDDM to delete all created files and settings.
Exported data will not be deleted.

QA Check Results And Log: D:\HIVDDM1010\QA

Temporary Database File: D:\HIVDDM1010\TMPDB

Please note that the db3 file may need up to twice as much space as the ODBC source

Export Database Type: MDB

Export Database Destination: D:\HIVDDM1010\Output

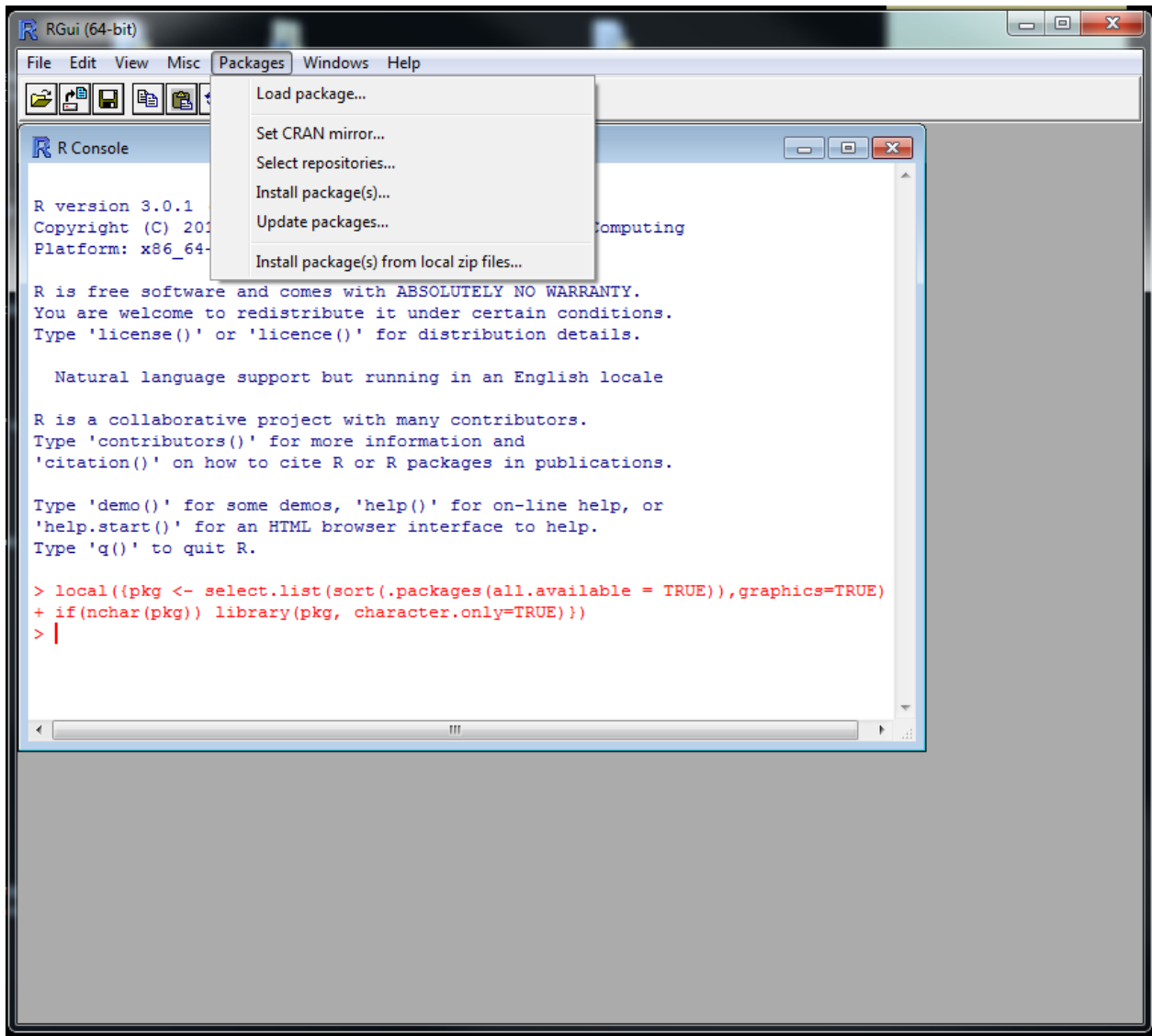
(Re)Load Data

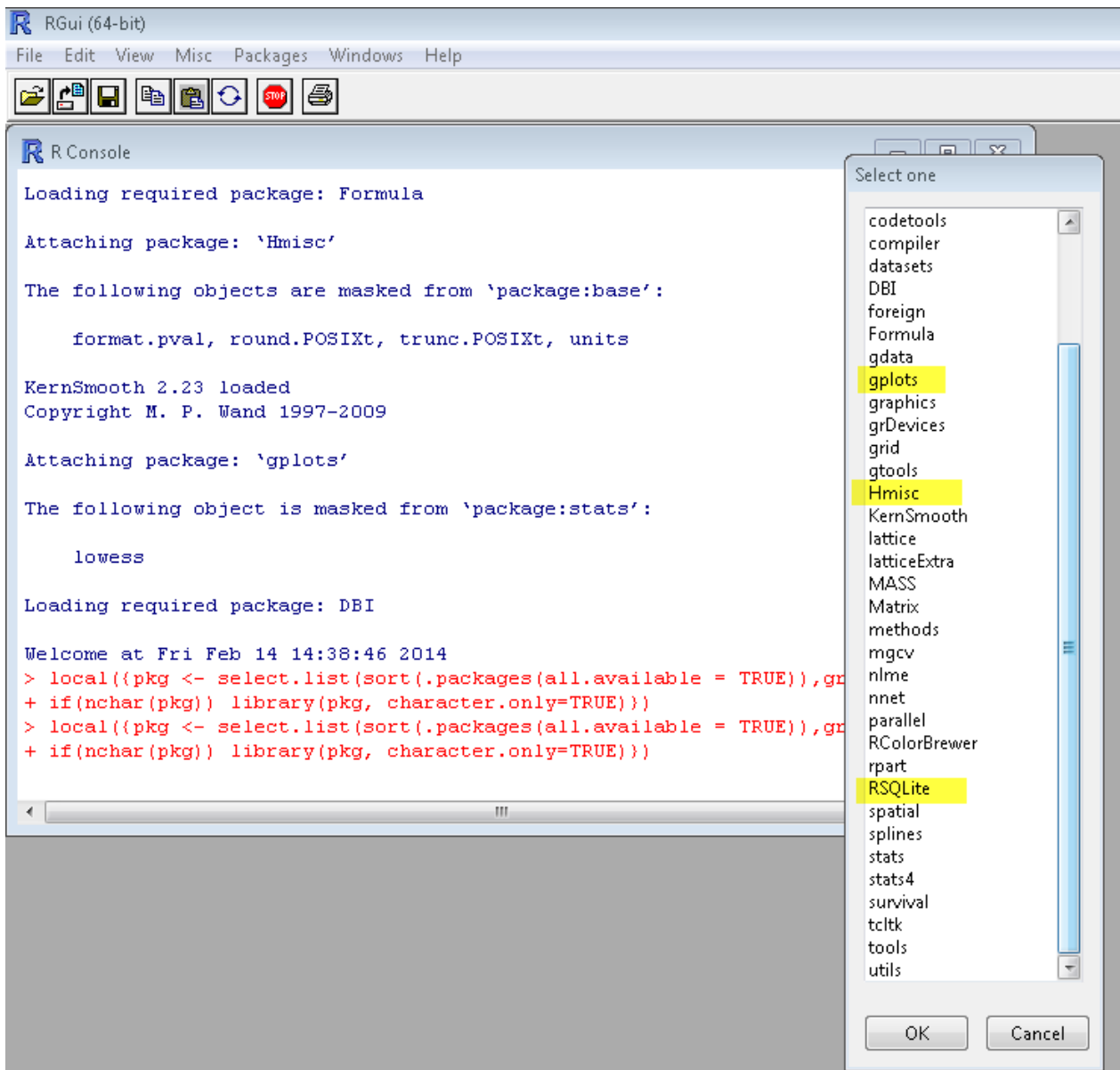
4-R

Section 4 is completely new. It is for running some descriptive analysis on your data using “R”. R is a free software environment for statistical computing and graphics. You can download the latest version of R by going to <http://cran.r-project.org/>.

In addition to installing R you will have to make sure some packages are installed in R for the statistics to be run. The Packages you need to make sure to have are “RSQLite”, “Hmisc” and “gplots”.

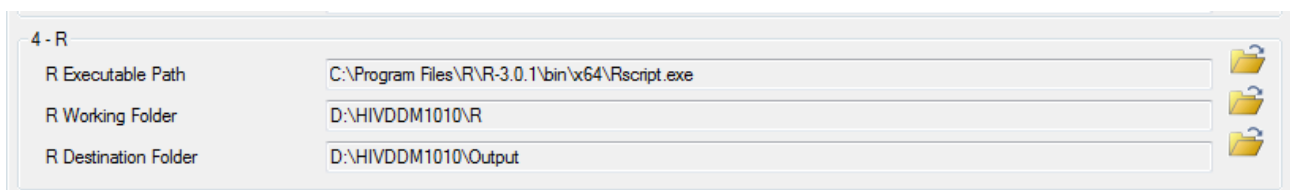
Please find below a short instruction of how to make sure to load the packages into R. In the same place where the Rscript.exe is placed you probably have an RGUI.exe – if you open that and click ‘Packages’ and then ‘Load Package’ a list of packages on the computer appears. If the packages you’re looking for are not shown in the list, then you will need to choose Install packages(s) and follow the on-screen instructions. Be aware that R is case sensitive when you look for packages.





After having set up R you need to make sure to fill out the settings correctly to be able to use the new statistical element of the DDM tool.

The fields in section 4 should be filled out as follows:



“R Executable Path” is the location on your computer of the RScript.exe program. This is where R is installed. (In my case the path is “C:\Program Files\R\R-3.0.1\bin\x64\Rscript.exe”). Please note that you may have more than one RScript.exe file on your computer – if you have trouble running the ‘Perform Analysis’ part of the program, you may need to point to a different version of the RScript.exe.

“R Working Folder” is where the tool stores the R-script that is called by your installation of R. This is also where R stores any files it needs to use while processing your data.

“R Destination Folder” is where the pdf file that contains the descriptive statistics is stored. In my case I choose the same location as the “Export Database Destination” so that I can easily find the pdf-file to send to the RCC along with the Export database.

Project Feedback

Once you have set all the Settings you need to restart the tool to get access to the “Project Feedback (data managers)” tab.

The Project Feedback tab is where you choose the projects that your Cohort Principal Investigators (PIs) have selected to contribute data to. This process is the same as last year. Once you choose the projects press the “Check Data” button and follow the onscreen instructions. This should take you to the “Quality Control” tab where you are required to comment on all checks that find more than 0 records. You will not be able to continue with the descriptive analysis or any other processing before you make these comments.

This year you can view detailed information about the check directly in the tool, if you click on the button view.

Select QA Checks to Execute:

Select all checks

Deselect all checks

	Execute	Table	Error Code	Description	Records Identified	Comment	Comment Valid	Detail
	<input checked="" type="checkbox"/>	tblLAB_RNA	R_COHERE005	All patients listed in BAS should h...	1	No Lab_rna data availabl...	<input checked="" type="checkbox"/>	View
	<input checked="" type="checkbox"/>	tblART	A_COHERE004b	Combination of FTC(code) and 3T...	1	Confirmed	<input type="checkbox"/>	View
	<input checked="" type="checkbox"/>	tblLAB	LATC007LAB_ST	Mapping to HICDEP codes: Pleas...			<input type="checkbox"/>	View
	<input checked="" type="checkbox"/>	tblBAS	BATC001f	LTART_D after DEATH_D in tblL...	0		<input type="checkbox"/>	View
	<input checked="" type="checkbox"/>	tblBAS	BATC006MODE	MODE not coded as coding lists o...	0		<input type="checkbox"/>	View
	<input checked="" type="checkbox"/>	tblBAS	BATC006ETHNIC	ETHNIC not coded as coding lists...	0		<input type="checkbox"/>	View
	<input checked="" type="checkbox"/>	tblBAS	BATC006ORIGIN	ORIGIN not coded as coding lists ...	0		<input type="checkbox"/>	View
	<input checked="" type="checkbox"/>	tblBAS	BATC004i	HIV_POS_D is in the future	0		<input type="checkbox"/>	View
	<input checked="" type="checkbox"/>	tblBAS	BATC006EDU_L...	EDU_LVL not coded as coding lis...	0		<input type="checkbox"/>	View
	<input checked="" type="checkbox"/>	tblBAS	BATC006SERO...	SEROHOW not coded as coding ...	0		<input type="checkbox"/>	View
	<input checked="" type="checkbox"/>	tblBAS	BW000	Patient ID is missing but there is a ...	0		<input type="checkbox"/>	View
	<input checked="" type="checkbox"/>	tblBAS	BATC004h	CENS_D is in the future	0		<input type="checkbox"/>	View
	<input checked="" type="checkbox"/>	tblBAS	BW002	Duplicate patients	0		<input type="checkbox"/>	View

Description:

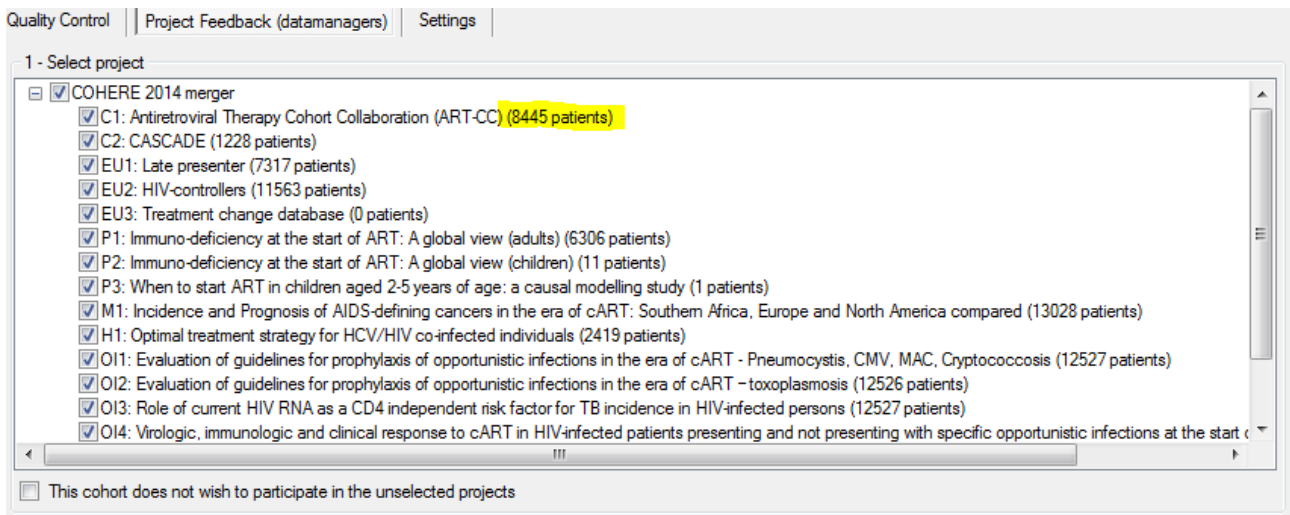
Combination of FTC(code) and 3TC(J05AF05) used any time

Execute Save Summary

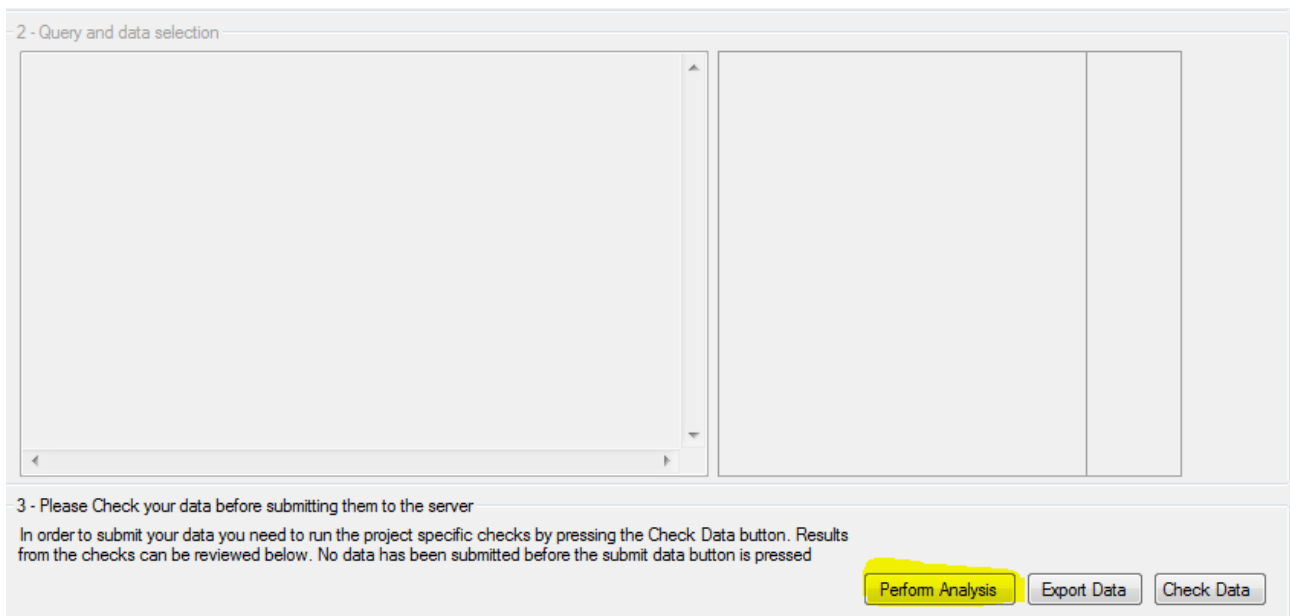
View SQL Syntax:

```
SELECT DISTINCT 'A_COHERE004b' AS QACheck, 'Combination of FTC(code) and 3TC(J05AF05) used any time' AS QADescription, ART_FIRST.ART_ID AS ART_ID2, ART_SECOND.ART_ID AS ART_ID1, ART_SECOND.ART_SD AS ART_SD2, ART_SECOND.ART_ED AS ART_ED2
FROM tblART ART_FIRST INNER JOIN tblART ART_SECOND ON
ART_FIRST.PATIENT = ART_SECOND.PATIENT AND
ART_FIRST.ART_SD < ART_SECOND.ART_ED AND
ART_SECOND.ART_SD < ART_FIRST.ART_ED
WHERE ART_FIRST.ART_ID = 'J05AF05' AND ART_SECOND.ART_ID = 'J05AF05'
```

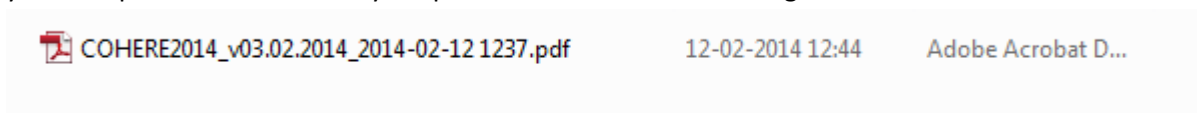
When you are done with these comments, return to the “Project Feedback (datamanagers)” tab. As a new feature you will notice that at the end of the Project names you can now see how many patients have been selected to participate to each project (see example highlighted in the screenshot below).



Once you have performed the QA and have made your comments you are now able to press an exciting new button "Perform Analysis" located in section 3 on the "Project Feedback (datamanagers)" tab. This will open a command-prompt that will invoke Rscript.exe and make the descriptive statistics on the data you are planning to submit.



Once the analysis is run the tool will open a pdf document on your screen. This pdf document is saved on your computer at the location you specified under the new setting "R Destination Folder".



Every time you run the "Perform Analysis" part of the program the pdf files are deleted and new ones created. If you wish to keep the files from each time you will need to copy them to a different location. The reason why the files are deleted is to make sure you only mail the final version of the statistics to us along with the export database you create using the program.

We wish you good luck in using the tool, and hope you will use the new features we have created.

Best Regards, Both RCC data managers